



Windsor Plywood



FEATURING
WINCHESTER

2025

Vinyl Flooring Buyer's Guide

Ver 1.0 (Aug 2024)

Timber
390-0176 |



Contents

Why Vinyl?	3
CARE AND MAINTENANCE	4
Frequently Asked Questions About Vinyl Flooring	5
PRODUCT QUICK COMPARE GUIDE	7
Premium Glue Down/Loose Lay Vinyl Plank	8
5MM LOOSE LAY VINYL PLANK FLOORING	9
Self-Locking Vinyl Plank & Tile	10
10MM VINLOC VINYL PLANK FLOORING	11
10.5MM VINLOC VINYL PLANK FLOORING	12
10.5MM VINLOC VINYL TILE FLOORING	13
Stone Core Click Engineered Vinyl Plank	14
6.5MM STONE CORE CLICK VINYL FLOORING	15
5.5MM STONE CORE CLICK VINYL FLOORING	16
Consumer Warranties & Customer Support	17
Appendix A: What is FloorScore?	18
Appendix B: The ABC's of STC and IIC	20
Appendix C: Vinloc Self Locking Vinyl Plank Installation Guide	22
Appendix D: Stone Core Click Vinyl Plank Installation Guide	25



Speyside
391-0159

Why Vinyl?

Vinyl flooring has quickly become the most requested flooring option for homeowners. It is an affordable alternative to hardwood or laminate flooring, and offers a wide range of features and benefits.

Benefits of Vinyl Flooring

All Winchester vinyl products are ideal for areas not suitable for laminate, solid hardwood or engineered hardwood, such as kitchens, bathrooms and basements. Commercial products are also perfect for hair salons, offices, restaurants and hotels.

Easy do-it-yourself installation, with a variety of installation types available depending on the user's skill level. Vinyl flooring can be installed in almost any room, at or below grade.

Because it is hygienic and easy to clean, resists scuffs and stains, and is sound absorbing, vinyl flooring is the perfect choice for active families with kids or pets.

Vinyl's softness and warmth provides comfort, especially when standing for long periods.



Care and Maintenance

Vinyl flooring is very easy to clean and maintain. These are the guidelines that we recommend.

Preventive Care

Use felt pads under heavy furniture, chairs and tables.

A protective hard floor chair mat should be used on any area where furniture with castors (such as an office chair) will be used.

Use mats at entry areas and clean on a regular basis. Mats should have a non-staining back.

Avoid exposure to direct sunlight for prolonged periods of time. Use drapes or blinds to minimize direct sunlight during peak sunlight hours.

Water leakage over or around the outer edges of the flooring can damage a wood subfloor, so clean up liquids as soon as possible.

When moving heavy furniture, use protective boards, pads or appropriate furniture movers designed for use over hard surface flooring.

Save a few planks of flooring in case of accidental damage. In some cases, planks can be replaced or repaired without removing the rest of the floor.

If other trades are in the work area, a floor protector is highly recommended to prevent damage.

High heels and pets with unclipped nails can scratch or damage a floor's finish.

Cleaning Your Floor

Sweep regularly to remove surface grit and dust. Use a damp cloth or mop to clean up any dirt or footprints. Avoid using excessive water to clean the floor. CAUTION: Planks are slippery when wet.

Use a pH-neutral cleaner, rinse the floor thoroughly and allow to dry.

Never use wax, polish, abrasive cleaners or scouring agents as they may dull or distort the finish.



Academy
390-0351

Frequently Asked Questions About Vinyl Flooring

How is vinyl flooring made?

Vinyl flooring consists of PVC – a type of plastic – topped with a decorative paper layer and a wear layer. Some vinyl may be reinforced with fiberglass for greater stability. The wear layer is also treated with aluminum oxide or ceramic bead. A variety of textured finishes are available that are applied to the top of the vinyl, which makes it look and feel more like real wood or tile.

What does the thickness and the wear layer thickness mean?

Vinyl flooring packaging will show two thicknesses, one for the total product and one for the wear layer. Total thickness will determine how well the vinyl hides subfloor imperfections and is typically measured in millimeters. The wear layer thickness will determine your floor's durability and is measured in millimeters or in mil. A 0.5 mm (20 mil) wear layer is usually the minimum required for commercial uses.

Are there formaldehyde emissions from vinyl flooring?

Formaldehyde is a harmful chemical usually associated with laminate and engineered flooring products. It is not a concern with today's vinyl flooring. All our vinyl products are verified as formaldehyde free at time of production.

Is vinyl flooring completely waterproof?

Because vinyl is made from PVC, it is completely waterproof by itself. However, a large amount of standing water can seep through the seams between the planks or tiles, and damage your subfloor, just like with other types of flooring. For this reason, you should clean up spills as quickly as possible.

Where can I install vinyl flooring?

Vinyl flooring can be installed in almost any room, over a lightly textured or porous surface, or over a well-bonded, solid floor. We do not recommend that you install vinyl in areas where it will be exposed to long-term direct sunlight, such as in sunrooms or solariums.

Can I install vinyl flooring over concrete?

You can install vinyl flooring over concrete that has cured for at least 60 days prior to installation. Glue down products should not be installed on below-grade concrete surfaces where moisture may be present and could cause adherence issues.

Can I install vinyl flooring over ceramic tiles?

Yes, but you will need to fill grout lines with a leveling compound. Subfloors must be even within 3 mm over 1.82 m (1/8" over 6').



Glendale
391-0161

Can I install vinyl flooring over plywood, particle board or chipboard?

Yes, you can install vinyl over untreated veneer plywood. Do not install glue down products over particleboard, chip board (OSB) or any form of mechanically textured or embossed wood intended for wall paneling.

Can I install vinyl flooring over carpet?

No, all carpet and carpet padding as well as any smooth edge or tack strip must be completely removed prior to installation.

Do I need to use transition moulding?

If you exceed the maximum run length for your click or self-locking vinyl, you will need to use transition moulding.

Should I stagger planks during installation?

Yes, always stagger vinyl when installing the floor. Start the first row with a full plank, the second row with 2/3 of a plank and the third row with 1/3 of a plank. The distance between joints from one row to the next must be 20 cm (8") or greater for the remainder of the installation.

Which direction do I install vinyl flooring?

First consider which way the light enters your room, as it is best to install vinyl with the planks running parallel to the light coming in windows or doors. The starter wall should also be as long and straight as possible.

What happens if my first row of planks is not straight?

It is very important that your first row be absolutely straight as it is the foundation of your installation. If your first row is not properly aligned or joints are not sealed tightly, there may be gaps between the planks. This will allow residue or unwanted particles to get caught in the grooves and result in poor alignment. Do not continue to install your second row of planks if your first row is installed incorrectly.

What should I do if a plank is damaged?

Planks can be replaced or repaired by a flooring professional.

For complete installation instructions please see product specific guides printed on and enclosed in every box of Winchester vinyl flooring.

Product Quick Compare Guide

Here is a quick guide to compare Winchester Products

	Install Type	Wear Layer Thickness	Product Size	Attached Foam Underlay	Floorscore Certified	Suitable for Radiant Heating	Anti Microbial	Impact Isolation Class (IIC)
Winchester Timeless Series Vinyl Plank	Premium Glue Down/ Loose Lay	0.5mm	7" x 48"	No	Yes	Yes	Yes	66
Winchester Extra Vinyl Plank	Self-Locking (Vinloc)	0.15mm	6" x 48"	No	Yes	No	No	73
Winchester Premier Series Vinyl Plank	Self-Locking (Vinloc)	0.5mm	6" x 48"	No	Yes	No	No	73
Winchester Commercial Vinyl Tile	Self-Locking (Vinloc)	0.5mm	12" x 24"	No	Yes	No	No	73
Winchester Kore Vinyl Plank	Click (QuickClick)	0.3mm	7" x 48"	Yes	Yes	Yes	Yes	79
Winchester Legacy XL Vinyl Plank	Click (QuickClick)	0.5mm	9" x 72"	Yes	Yes	Yes	Yes	79



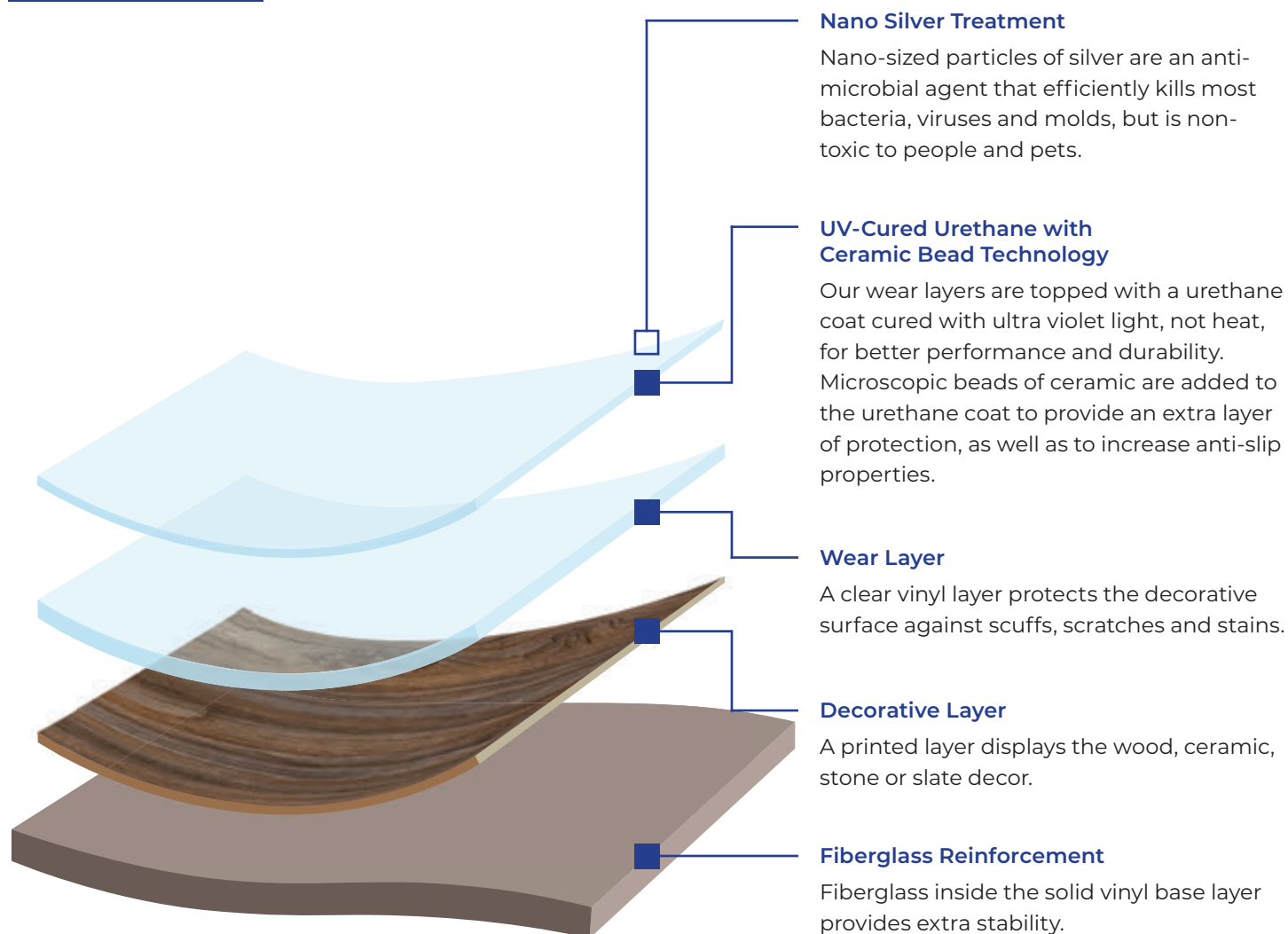
Premium Glue Down/ Loose Lay Vinyl Plank

Pointe
391-0155 |

You can install premium products from Winchester either glue down for a permanent installation or loose lay for a quick, easy installation (see installation guide for details).

Our premium vinyl is sound rated to IIC 66, so it can be installed in some multi-family units.

COMPOSITION





Silvertip
391-0151

WINCHESTER

TIMELESS SERIES

5mm Loose Lay Vinyl Plank Flooring



Features

- Floorscore Certified for Indoor Air Quality
- Anti microbial Coating
- Commercial Wear Layer
- Lifetime Residential Warranty
- Adhesive free, "Loose Lay" installation possible

Thickness	5mm
Width	7"
Length	48"
Sq. Ft./Box	23.36
Wear Layer	0.5mm (20 mil)

Surface	Medium Wood Grain
---------	-------------------

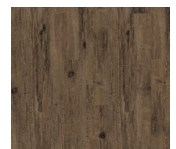
Indoor Air Quality Certification	FloorScore
Acoustical Properties	IIC 66/STC 67
Residential Warranty	Lifetime
(Light) Commercial Warranty	30 Year



Silvertip
391-0151



Northlands
391-0153



Pointe
391-0155



Wolf Ridge
391-0157



Speyside
391-0159



Glendale
391-0161

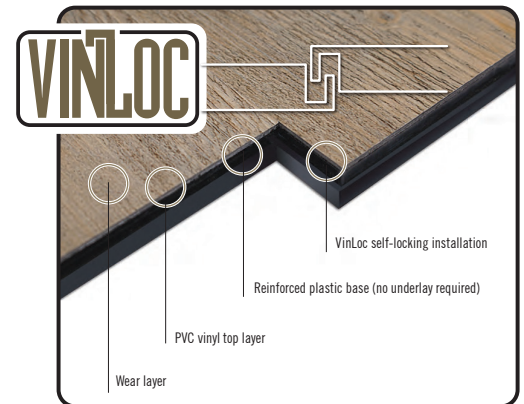
Self-Locking Vinyl Plank & Tile

Blue Pine
390-0164

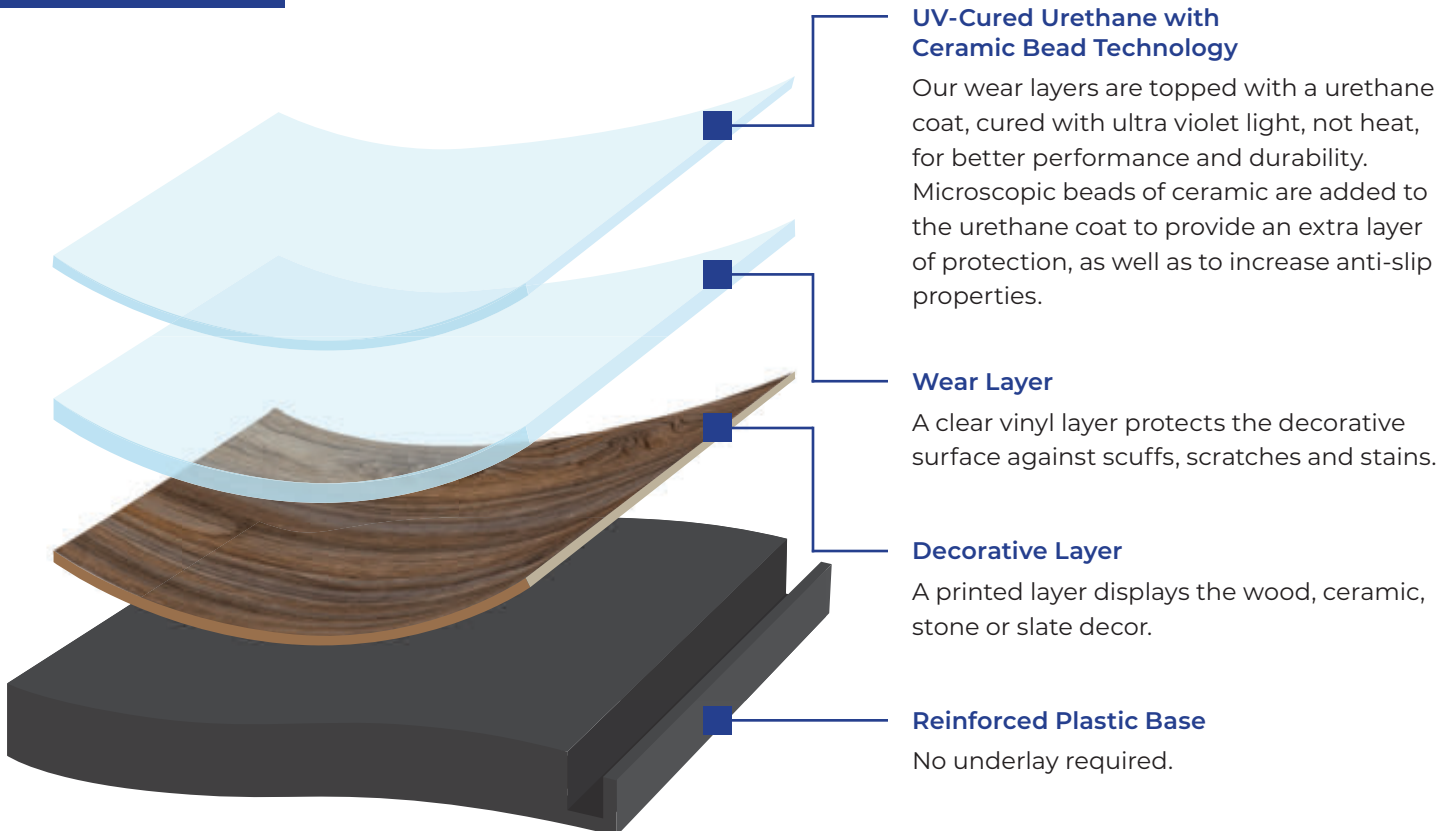
Adhesive free, do-it-yourself installation.

Can be installed over almost any subfloor, as well as over some types of residual adhesive.

Winchester self-locking vinyl is sound rated to IIC 73 and is suitable for multi family applications.



COMPOSITION





Walterdale
390-0253

WINCHESTER

EXTRA & EXTRA ESSENTIALS SERIES

10mm Vinloc Vinyl Plank Flooring

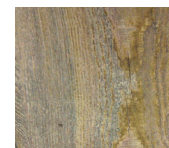
Thickness	10mm
Width	6"
Length	48"
Sq. Ft./Box	24
Wear Layer	0.15mm (6 mil)

Surface	Medium Wood Grain
Connection	"Vinloc" Vertical channel
Edge Joint	Flush

Indoor Air Quality Certification	FloorScore
Acoustical Properties	IIC 73/STC 73
Residential Warranty	10 Year
(Light) Commercial Warranty	5 Year

Features

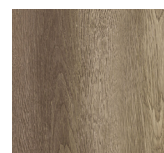
- Durable waterproof surface
- Easy to install
- Easy to clean
- FloorScore Indoor Air Quality
- Condo/Strata rated sound control



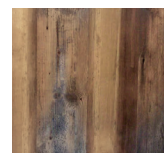
Augusta Barnwood
390-0101



Mandoline Maple
390-0105



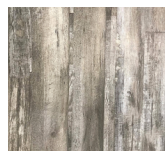
Creekside
390-0158



Blue Pine
390-0164



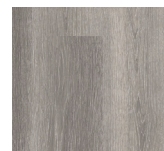
Reclaimed
Driftwood
390-0166



Santos Rustic
390-0168



Sherwood Forest
390-0170



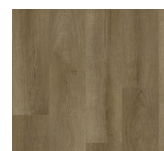
Walterdale
390-0253



Wapiti
390-0257



Tungsten
390-0172



Oakville
390-0174



Timber
390-0176



Sutherland
390-0178



Iron Mountain
390-0183

WINCHESTER

PREMIER SERIES

10.5mm Vinloc Vinyl Plank Flooring



Features

- Durable waterproof surface
- High Definition woodgrain texture
- Microbeveled edges
- Easy to install
- Easy to clean
- FloorScore Indoor Air Quality
- Condo/Strata rated sound control
- Lifetime Residential wear warranty

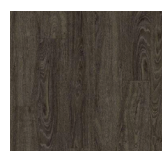
Thickness	10.5mm
Width	6"
Length	48"
Sq. Ft./Box	24
Wear Layer	0.5mm (20 mil)

Surface	EIR Woodgrain
Connection	"Vinloc" Vertical channel
Edge Joint	Microbevel

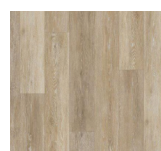
Indoor Air Quality Certification	FloorScore
Acoustical Properties	IIC 73/STC 73
Residential Warranty	Lifetime
(Light) Commercial Warranty	30 Year



Drumheller
390-0181



Iron Mountain
390-0183



Nordic Blonde
390-0185



Platinum
390-0187



Toffee Nut
393-0535

WINCHESTER

COMMERCIAL SERIES

10.5mm Vinloc Vinyl Tile Flooring

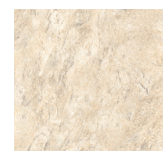
Thickness	10.5mm
Width	12"
Length	24"
Sq. Ft./Box	24
Wear Layer	0.5mm (20 mil)

Surface	Stone Texture
Connection	"Vinloc" Vertical channel
Edge Joint	Microbevel

Indoor Air Quality Certification	FloorScore
Acoustical Properties	IIC 73/STC 73
Residential Warranty	Lifetime
(Light) Commercial Warranty	30 Year

Features

- Durable waterproof surface
- Easy to install
- Easy to clean
- FloorScore Indoor Air Quality
- Condo/Strata rated sound control
- Commercial grade wear layer
- Lifetime Residential Warranty



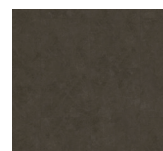
Irish Cream
393-0510



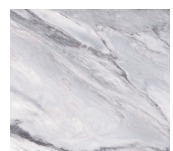
Baltic Fossil
393-0525



Toffee Nut
393-0535



Modern Rock
393-0540



Classic Rock
393-0545



Stone Core Click Engineered Vinyl Plank

Academy
390-0351

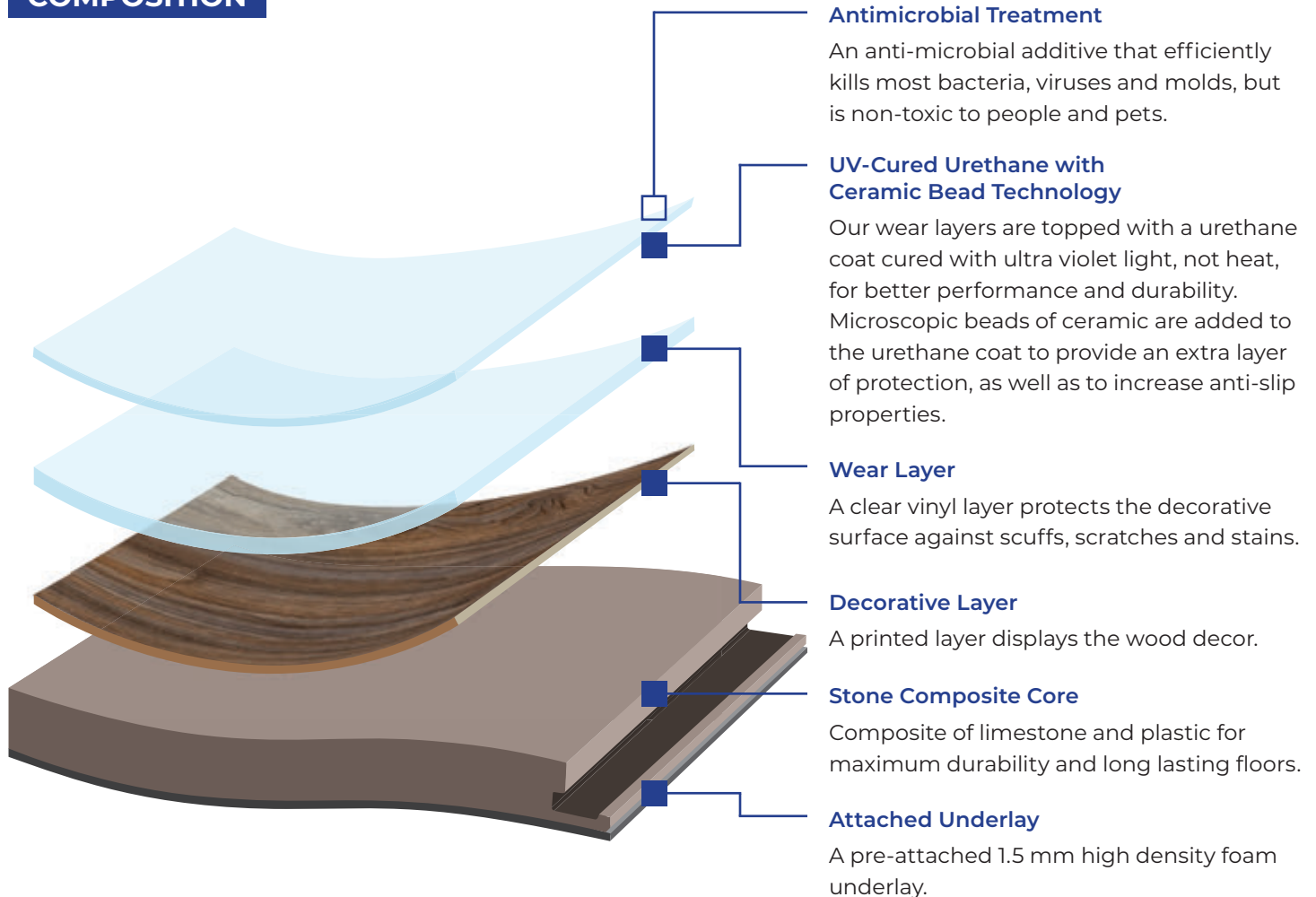
Adhesive free, QuickClick drop and go installation.

57% denser and resists depressions 52% better than standard rigid core product, creating a durable, long-lasting floor.

Tough stone core with up to 65% limestone limits shrinkage and expansion, which allows for wide installations up to 100 lineal feet (30 m) in any direction in continually heated homes.

Can be used in a wide range of temperatures making it perfect for 4 season cabins and locations where site temperatures may periodically change.

COMPOSITION





Metro
390-0361

WINCHESTER

LEGACY XL COLLECTION

6.5mm Stone Core Click Vinyl Flooring



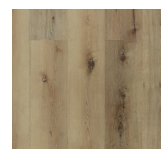
Features

- Extra W-I-D-E and extra L-O-N-G
- 100% Waterproof core
- Realistic woodgrain embossing with rich multi-chromatic colours
- Kid and pet friendly easy clean surface
- Condo and strata rated sound absorption
- Commercial grade wear layer
- Floorscore indoor air quality certified

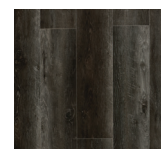
Thickness	6.5mm
Width	9"
Length	72"
Sq. Ft./Box	27.18
Wear Layer	0.5mm (20 mil)

Surface	EIR Woodgrain
Connection	14F Click
Edge Joint	Microbevel

Indoor Air Quality Certification	FloorScore
Acoustical Properties	IIC 79/STC 79
Residential Warranty	Lifetime
(Light) Commercial Warranty	30 Year



Academy
390-0351



Capilano
390-0353



Hudson
390-0355



Maison
390-0357



Metro
390-0361



Mission
390-0363



Amherst
390-0387

WINCHESTER

KORE COLLECTION

5.5mm Stone Core Click Vinyl Flooring



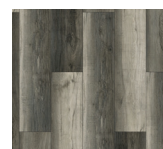
Features

- 100% Waterproof core
- Realistic woodgrain embossing with rich multi-chromatic colours
- Kid and pet friendly easy clean surface
- Sound and vibration absorbing pad attached
- Meets or exceeds most condo and strata sound insulation requirements
- Stylish selection
- Floorscore indoor air quality certified

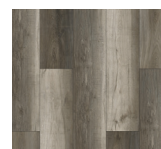
Thickness	5.5mm
Width	7.17"
Length	48.82"
Sq. Ft./Box	24.29
Wear Layer	0.3mm (12 mil)

Surface	Woodgrain
Connection	14F Click
Edge Joint	Flush

Indoor Air Quality Certification	FloorScore
Acoustical Properties	IIC 79/STC 79
Residential Warranty	30 Year
(Light) Commercial Warranty	20 Year



Somerset
390-0381



Briarwood
390-0383



Oxfordshire
390-0385



Amherst
390-0387



Lakehouse
390-0388



Gristmill
390-0389



Consumer Warranties & Customer Support

Consumer warranties and customer support are integral components of our products.

For vinyl products, our warranty is based on the wear layer:

Wear Layer Thickness	Consumer Warranties	
	Residential	Commercial
0.5 mm (20 mil)	Lifetime	30 Year
0.3 mm (12 mil)	30 Year	20 Year
0.2 mm (8 mil)	20 Year	10 Year
0.15 mm (6 mil)	10 Year	5 Year

Wolf Ridge
391-0157

Definitions

Residential:	Kitchen, Bedroom, Dining Room, Recreation Room, Foyer, Bathroom
Light Commercial:	Small Retail Shop (up to 200 ft ²), Waiting Room, Trade Show Booth, Small Office
Commercial:	Restaurant, Large Retail Shop, School Classroom, Large Office, Nurses' Station, Hair Salon (Working Area), Assisted Living Facility

What is FloorScore?



CERTIFIED BY
SCS Global Services

Capilano
390-0353

When it comes to indoor air quality, a primary concern is the emission level of specific volatile organic compounds (VOCs). FloorScore® Indoor Air Quality (IAQ) Certification means that a flooring product is independently certified by SCS to comply with the volatile organic compound emissions criteria of the California Section 01350 Program. Hundreds of resilient hard surface flooring materials and their adhesives bear the FloorScore® seal. This seal tells you that the products have been independently certified by SCS to comply with the volatile organic compound emissions criteria of the California Section 01350 Program (California Standard Method for the Testing and Evaluation of Volatile Organic Chemical Emissions from Indoor Sources Using Environmental Chambers, Version 1.2). Any product that has met these stringent standards is a product that will contribute to good indoor air quality.

Why You Should Care About FloorScore

Indoor Air Quality or IAQ

IAQ is important because, if you're like most people, you spend around 90% of your time indoors. If you're breathing poor quality air, you could be facing a higher risk level for a variety of health problems, including headaches, dizziness, and more serious long-term conditions. The FloorScore® certification means healthier, cleaner air. And that means healthier humans.

Can IAQ really be improved?

Absolutely. Here are five ways to improve your IAQ:

1. Improve your HVAC system design and maintenance
2. Ensure adequate ventilation with clean air
3. Improve air filtering
4. Schedule maintenance or remodeling for minimum impact
5. Control the sources of volatile organic compounds (VOCs)

What's your building's FloorScore?

Indoor air quality (IAQ) in a building depends on many factors, including:

- How well the HVAC (heating, ventilation, and air conditioning) system and filters are maintained,
- How well and how often the rooms are cleaned,
- The people, activities and furnishings in the building,
- The outdoor environment, and
- Surfaces and finishes throughout.



Some of the Environmental Programs that Recognize FloorScore Certified Products

- U.S. Green Building Council LEED Rating System
- Green Guide for Health Care
- NAHB ANSI National Green Building Standard
- BREEAM (Building Research Establishment Environmental Assessment Method)
- Collaboration for High Performance Schools (CHPS)



About SCS Global Services

SCS is an internationally recognized third-party evaluation, testing, and certification organization. SCS programs span a wide cross-section of the economy, including consumer products, the energy industry, manufacturing and retail, and home improvement and construction.

As a third party independent certification firm, SCS audits and determines whether products qualify for the FloorScore® seal by meeting the requirements of SCS-EC-10.3-2014 v3.0. Under this program, SCS (1) reviews all VOC emissions test reports for particular products generated by independent testing laboratories; (2) determines whether those test results meet the California Section 01350 requirements for listed VOCs; and (3) conducts periodic manufacturing plant inspections to review product formulas, processing, and quality control to ensure the continuing integrity of the FloorScore® seal.



The ABC's of STC and IIC

IIC and STC are both sound testing methods used to evaluate the sound transmission characteristics of building materials and structures. They are commonly employed in the construction industry to assess the acoustic performance of floors, walls, and other assemblies giving them an objective score that can be used to compare them to similar assemblies.

Impact Insulation Class (IIC)

The Impact Insulation Class (IIC) is a quantitative measure of how well a floor assembly reduces impact sound transmission, such as footsteps or dropped objects, from one space to another. It is primarily used to evaluate the sound insulation or absorbing properties of floors in multi-story or multi-family buildings. The higher the IIC rating, the better the floor assembly's ability to reduce impact noise.

The IIC test involves generating standardized impact noise, typically by using a tapping machine on the test floor, and measuring the resulting sound levels in the receiving room below. The measurements are taken at various frequencies, and the data is used to calculate the overall IIC rating. The IIC scale ranges from 20 to 80 or higher, with higher values indicating better sound insulation.





Sound Transmission Class (STC)

The Sound Transmission Class (STC) is a rating system that quantifies how well a building partition, such as a wall or floor, attenuates airborne sound transmission. It measures the ability of a structure to reduce sound transfer between spaces due to speech, music, television, or other airborne noises. The STC rating is commonly used to assess the sound insulation of walls and partitions.

To determine the STC rating, a standardized noise spectrum is generated on one side of the partition, and the sound levels are measured on both sides. The measurements are taken at various frequencies, and the resulting data is used to calculate the STC rating. The STC scale ranges from 25 to 70 or higher, with higher values indicating better sound insulation.

It's worth noting that both IIC and STC ratings are single-number values that provide a simplified measure of sound insulation. While they are useful for comparing different materials and assemblies, they do not provide a complete picture of the acoustic performance. Other factors, such as flanking transmission and low-frequency noise, should also be considered for a comprehensive assessment of soundproofing.

Installation Guide

Self Locking Vinyl Plank

APPLIES TO:

- Extra & Extra Essentials
- Premier Series
- Commercial Series



SUITABLE SURFACES

Lightly textured or porous surfaces. Well bonded, solid floors. Dry, clean, well-cured concrete. Wood floors with plywood on top. All surfaces must be clean and dust free.

UNSUITABLE SURFACES

Rough, uneven surfaces. Rough, heavily textured and/or uneven surfaces may telegraph through the vinyl and distort the finished surface.

Do not install this product in areas which are exposed to long term direct sunlight such as sun rooms or solariums. Not recommended for installation over floors with under floor heating.

WARNING: DO NOT REMOVE OLD RESILIENT FLOORING. THESE PRODUCTS MAY CONTAIN EITHER ASBESTOS FIBERS OR CRYSTALLINE SILICA, WHICH CAN BE HARMFUL TO YOUR HEALTH.

PREPARATION

The vinyl planks should be allowed to acclimatize at room temperature (approx 20°C/68°F) for 48 hours prior to installation. Carefully check planks for any defects before installation. Check that all **BATCH NUMBERS** and **ITEM NUMBERS** are the same and that you have purchased sufficient material to complete the job. Remove any traces of glue or residue from the previous flooring.

New concrete floors need to dry out for at least 60 days prior to installation. Wood plank floors require a plywood subfloor. All nail heads must be driven down below the surface. Securely nail all loose boards. Scrape, plane or fill uneven boards, holes or cracks using floor leveling compound, if sub-floor is uneven—over 3.2 mm (1/8") within a span of 1.2 m (4'). If installing over existing tile, use a floor leveling compound to skim coat grout lines. Make sure the floor is smooth, clean, and free of wax, grease, oil or dust, and sealed as necessary before laying planks.

The maximum run length is 9.14m (30') in either direction or an area of 83.6m² (900 ft²). Installation exceeding this size will require transition strips.

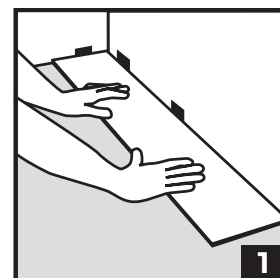
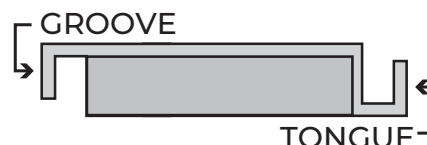
TOOLS & SUPPLIES

Circular saw, utility knife, spacers, pencil, tape measure, ruler and safety goggles.

INSTALLATION

Diagram 1

Begin laying your floor in the left corner of the longest wall. Start by placing the first panel with the groove side to the wall. Use spacers along each wall to maintain an expansion space of 8–12 mm (3/8"–1/2") between the wall and the flooring.



NOTE: This spacing must also be maintained between the floor and all vertical surfaces, including cabinets, posts, partitions, door jambs and door tracks. You will also need to use transition strips in doorways and between rooms. Failure to do so may cause buckling or gapping.

Diagram 2

To attach your second panel, lower and lock the end groove of the second panel into the end tongue of the first panel. Line up edges carefully. The panels should be flat to the floor.

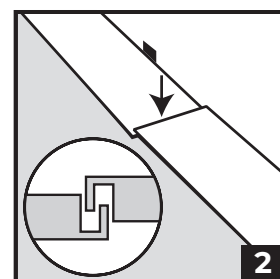
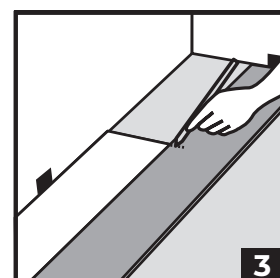


Diagram 3

Continue connecting the first row until you reach the last full panel. Fit the last panel by rotating the panel 180° with the pattern side upward. Place it beside the row, mark and then saw off excess. Attach as described above.





INSTALLATION GUIDE

Self Locking Vinyl Plank



Diagram 4

Begin the next row with the off-cut piece from the previous row to stagger the pattern. Pieces should be a minimum of 200 mm (8") long and joint offset should be at least 152.4 mm (6").

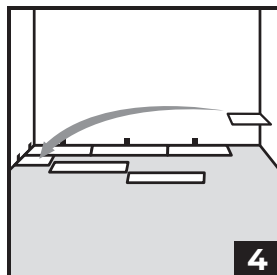


Diagram 5

To start your second row, lower the side groove into the side tongue of the panel in the previous row and lock into place. The panels should be flat to the floor.

Attach the second panel in the new row by lowering and locking the side groove on the long side of the plank into the side tongue of the first panel. Then lower and lock the end groove into the end tongue of the plank in the previous row. Continue laying remaining panels in this manner.

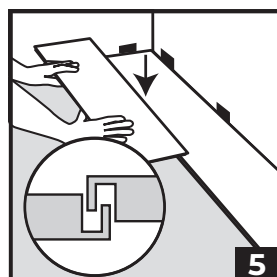


Diagram 6

To fit the last row, lay a panel on top of the previous row. With the tongue to the wall, lay another panel upside down on the one to be measured and use it as a ruler. Don't forget to allow room for spacers. Cut the panel and attach into position.

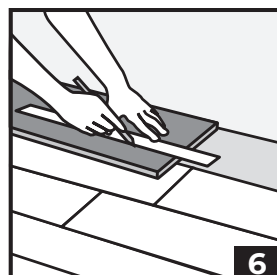


Diagram 7

Door frames and heating vents also require expansion room. First cut the panel to the correct length. Then place the cut panel next to its actual position and use a ruler to measure the areas to be cut out and mark them. Cut out the marked points allowing the necessary expansion distance on each side.

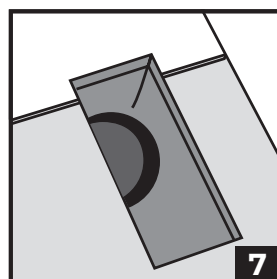
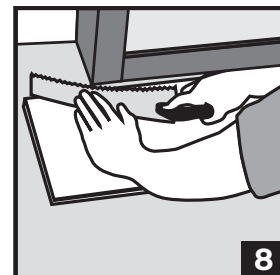


Diagram 8

You can trim door frames by turning a panel upside down and using a handsaw to cut away the necessary height so that panels slide easily under the frames.

Remove the spacers once the floor is completely installed.



CARE AND MAINTENANCE

Avoid exposure to direct sunlight for prolonged periods of time. Use drapes or blinds to minimize direct sunlight during peak sunlight hours.

- Sweep regularly to remove surface grit and dust. Use a damp cloth or mop to clean up any dirt and footprints. All spills should be cleaned up immediately.

CAUTION: Planks are slippery when wet.

- Never use wax, polish, abrasive cleaners or scouring agents as they may dull or distort the finish.
- High heels can damage floors.
- Do not allow pets with unclipped nails to scratch or damage the floor.

Use protective pads under furniture. If it becomes necessary to move any heavy fixtures or appliances over the flooring on casters or dollies, the flooring should be protected with 0.64 cm (1/4") or thicker plywood, hardboard or other underlayment panels.

Use doormats at entrance ways to protect the floor from discolouring. Avoid using rubber-backed rugs, as they may stain or discolour the vinyl flooring. If you have an asphalt driveway, use a heavy-duty doormat at your main door, as chemicals in asphalt can cause vinyl flooring to yellow.

If other trades are in the work area, a floor protector is highly recommended to help protect the finish of the floor.



INSTALLATION GUIDE

Self Locking Vinyl Plank



CAUTION: Some types of nails, such as common steel nails, cement coated or some resin or rosin coated nails, may cause a discolouration of the vinyl floor covering. Use only non-staining fasteners with underlayment panels. The procedure of gluing and screwing underlayment panels is not recommended. Solvent-based construction adhesives are known to stain vinyl floor coverings. All responsibility for discolouration problems caused by fastener staining or the use of construction adhesive rests with the underlayment installer/consumer.

HIGHLY RECOMMENDED

It's a good idea to save a few planks in case of accidental damage. Boards can be replaced or repaired by a flooring professional.

WARRANTY

This guarantee is for replacement or refund of the vinyl plank flooring only, no labor (including the cost of labor for installation of the replacement floor) or costs incurred with loss of time, incidental expenses or any other damage. It does not cover damage from improper installation or maintenance (including side or end gapping), burns, tears, indentations, stains or reduction in gloss level due to normal use and/or exterior applications. Gapping, shrinkage, squeaks, fading or structural sub floor related issues are not covered under this warranty. Temperature variations—**excessive heat or below freezing (-4°C/25°F and below)**—may cause expansion or contraction of the product.

10 Year Residential Warranty

Our 10-Year Residential Limited Warranty for vinyl plank means that for 10 years, from the date of purchase, your floor will be free from manufacturing defects and will not wear through or permanently stain from common household stains when installed and maintained according to instructions supplied with each carton.

5 Year Commercial Warranty

Our 5 Year Limited Commercial Warranty for vinyl plank means that for 5 years, from the date of purchase, your floor will be free from manufacturing defects and will not wear through when installed and maintained according to instructions supplied with each carton. Improper installation or workmanship should be directed to the contractor who installed the floor.

Claims

This guarantee applies only to the original purchaser and proof of purchase is required for all claims. Claims for wear must show a minimum dime size area. This guarantee is pro-rated based on the amount of time the floor has been installed. If you wish to file a claim under warranty, contact the authorized dealer where the flooring was purchased.

Installation Guide

Click Engineered Vinyl Plank

APPLIES TO:

- Legacy XL Collection
- Kore Collection

SUITABLE SURFACES

Lightly textured or porous surfaces. Well-bonded, solid floors. Dry, clean, well-cured concrete (cured for at least 60 days prior). Wood floors with plywood on top. Ceramic or porcelain tiles with grout lines filled with floor leveler. All surfaces must be clean and dust free.

UNSUITABLE SURFACES

Rough, uneven surfaces including carpet and underlay. Rough, heavily textured and/or uneven surfaces may telegraph through the vinyl and distort the finished surface. Do not install this product in areas which are exposed to long term direct sunlight such as sun rooms or solariums.

WARNING: DO NOT REMOVE OLD RESILIENT FLOORING. THESE PRODUCTS MAY CONTAIN EITHER ASBESTOS FIBERS OR CRYSTALLINE SILICA, WHICH CAN BE HARMFUL TO YOUR HEALTH.

RADIANT HEATED FLOORS

Can be installed over hydronic radiant heated floors or electric radiant heated floors that use embedded cables under the subfloor. **DO NOT INSTALL** over any electric heating mat that is installed on top of the subfloor. Do not turn heat above 29°C (85°F). To avoid overheating, the use of an in-floor temperature sensor is recommended.

PREPARATION

The vinyl planks should be allowed to acclimatize to room temperature (approx 20°C/68°F). Carefully check planks for any defects before installation. Any plank that has been installed will be deemed acceptable to the installer. Check that all **ITEM NUMBERS** are the same and that you have purchased sufficient material to complete the job. Remove any traces of glue or residue from the previous flooring.

New concrete floors need to dry out for at least 60 days prior to installation. Wood plank floors require a plywood subfloor. All nail heads must be driven down below the surface. Securely nail all loose boards. Scrape, plane or fill uneven boards, holes or cracks using floor-leveling compound if sub-floor is uneven—over 3.2 mm (1/8")

within a span of 1.2 m (4'). If installing over existing tile, use a floor leveling compound to skim coat grout lines. Make sure the floor is smooth, clean, and free of wax, grease, oil or dust, and sealed as necessary before laying planks.

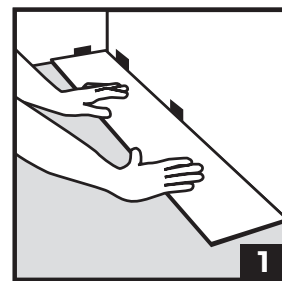
TOOLS & SUPPLIES

Saw, tapping block, rubber mallet, spacers, pencil, tape measure, ruler and safety goggles.

INSTALLATION

Diagram 1

Start in a corner by placing the first plank with the tongue side facing the wall. Use spacers around the perimeter of the room, as well as against any fixed objects, to maintain a minimum 8 mm (5/16") expansion space for rooms up to 12.2 m (40') in either direction and a minimum 12 mm (1/2") expansion space for rooms up to 30 m (100') in either direction. The expansion space accounts for the normal movement of the floor. A T-Moulding must be used for commercial spaces measuring greater than 30 m (100') in either direction. If the flooring is installed in an areas falling outside the normal room temperature range, a T-Moulding is required every 7.62 m (25').



NOTE: This spacing must also be maintained between the floor and all vertical surfaces, including cabinets, posts, partitions, door jambs and door tracks. You will also need to use transition strips in doorways and between rooms. Failure to do so may cause buckling or gapping.

Diagram 2

To attach your second plank, lower and lock the end tongue of the second plank into the end groove of the first plank. Line up edges carefully to ensure a close and tight fit. Using a rubber mallet, lightly tap the top of the end joints where the first and second planks lock together. The planks should lay flat to the floor.



INSTALLATION GUIDE

Click Engineered Vinyl Plank

WARNING: FAILURE TO PROPERLY LINE UP THE END JOINT AND ATTEMPTING TO FORCE IT IN WHILE OUT OF ALIGNMENT COULD RESULT IN PERMANENT DAMAGE TO THE END JOINT.

Diagram 3

Repeat this procedure for each subsequent plank in the first row. Continue connecting the first row until you reach the last full plank. Fit the last plank by rotating the plank 180° with the pattern side upward and placing it beside the first row of planks with its end up against the far wall. Line a ruler up across the end of the last full plank and across this new plank. Draw a line across the new plank with a pencil and cut with a saw.

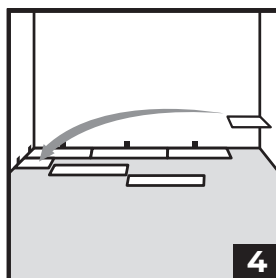
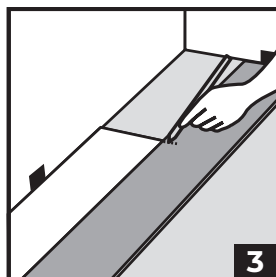
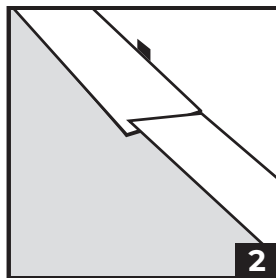
Rotate the plank 180° so that it is back to its original orientation. Lower and lock its end tongue into the end groove of the last full plank. Lightly tap the top of the end joints with a rubber mallet until the planks are flat on the floor.

Diagram 4

You will begin the next row with the off-cut piece from the previous row to stagger the pattern. Pieces should be a minimum of 200 mm (8") long and joint offset should be at least 400 mm (16"). Cut pieces should be no less than 76.2 mm (3") in width. Adjust layout for a balanced look.

Diagram 5

To start your second row, tilt and push the new plank's side tongue into the side groove of the very first plank. When lowered, the plank will click into place. Using a tapping block and rubber mallet, lightly tap the long side of the new plank to lock it with the planks of the first row. The planks should lay flat to the floor.



Attach the second plank of the new row first on the long side. Tilt and push plank into place, making sure edges are lined up. Lower plank to the floor. Using a tapping block and rubber mallet, lightly tap the long side of the new plank to lock it into place. Next, lightly tap down on the top of the end joints with a rubber mallet to lock them together. Continue laying remaining planks in this manner.

Diagram 6

To fit the last row, lay a plank on top of the previous row with its tongue to the wall. Lay a ruler across the plank so that it is lined up with the side of the planks of the previous row and draw a line across the new plank with a pencil. Don't forget to allow room for spacers. Cut the plank with a saw and attach into position.

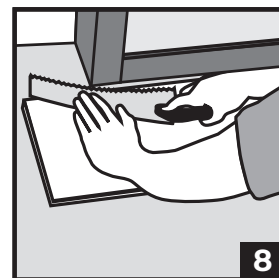
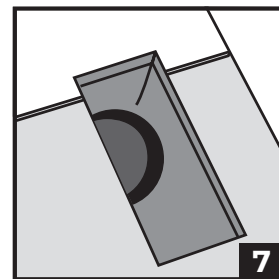
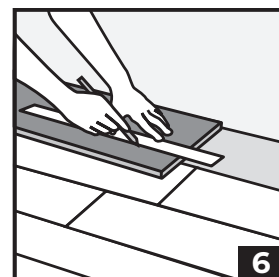
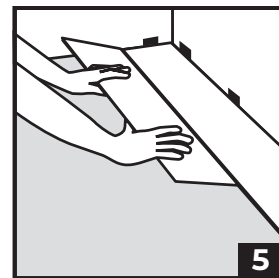
Diagram 7

Door frames and heating vents also require expansion room. First cut the plank to the correct length. Then place the cut plank next to its actual position and use a ruler to measure the areas to be cut out and mark them. Cut out the marked points allowing the necessary expansion distance on each side.

Diagram 8

You can trim for door frames by turning a plank upside down and using a handsaw to cut away the necessary height so that planks slide easily under the frames.

Remove the spacers once the floor is completely installed.





INSTALLATION GUIDE

Click Engineered Vinyl Plank

DISASSEMBLY

To disassemble the floor, tilt an entire row up and disconnect it from the previous row. Then disconnect each plank by sliding it out horizontally.

CARE AND MAINTENANCE

Avoid exposure to direct sunlight for prolonged periods of time. Use drapes or blinds to minimize direct sunlight during peak sunlight hours.

- Do not expose this floor to temperatures below -20°F or above 150°F (below -20°C or above 65.5°C).
- Water leakage over or around the outer edges of the flooring can damage a wood subfloor, so clean up water as soon as possible.
- Sweep regularly to remove surface grit and dust. Use a damp cloth or mop to clean up any dirt and footprints.

CAUTION: PLANKS ARE SLIPPERY WHEN WET.

- Never use wax, polish, abrasive cleaners or scouring agents as they may dull or distort the finish.
- High heels can damage floors.
- Do not allow pets with unclipped nails to scratch or damage the floor.
- Use felt pads under heavy furniture, chairs and tables.
- Use doormats at entrance ways to protect the floor from discolouring.

It's a good idea to save a few planks in case of accidental damage.

If other trades are in the work area, a floor protector is highly recommended to help protect the finish of the floor.

WARRANTY

This guarantee is for replacement or refund of the vinyl plank flooring only, not labor (including the cost of labor for installation of the replacement floor) or costs incurred with loss of time, incidental expenses or any other damage. It does not cover damage from improper installation or maintenance (including side or end gapping), burns, tears, indentations, stains or reduction in gloss level due to normal use and/or exterior applications. Gapping, shrinkage, squeaks, fading or structural sub floor related issues are not covered under this warranty.

Lifetime Residential Warranty

This quality vinyl plank is guaranteed not to wear through or stain for the duration of your life in your home. From the date of purchase, your floor will be free from manufacturing defects and will not wear through or permanently stain from common household stains when installed and maintained according to instructions supplied with each carton. *Lifetime means 35 years.

20 or 30 Year Commercial Warranty

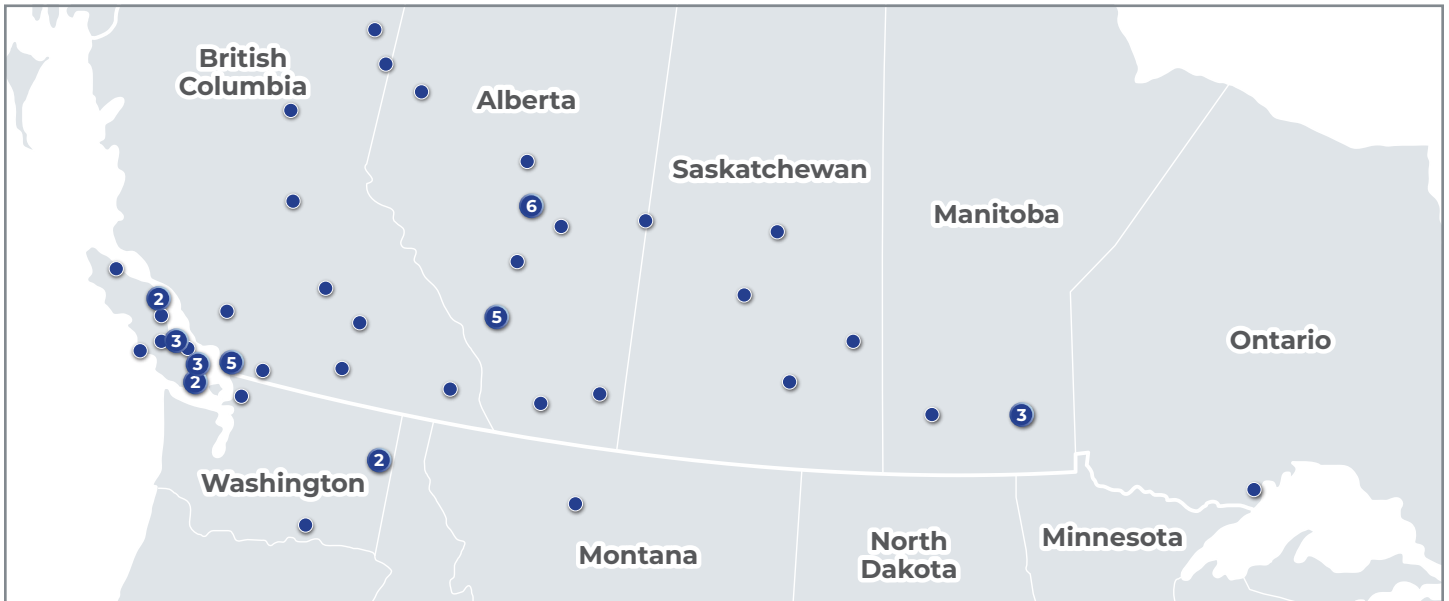
Our Limited Commercial Warranty for vinyl plank means that for 20 years (Kore Collection) or 30 years (Legacy XL), from the date of purchase, your floor will be free from manufacturing defects and will not wear through when installed and maintained according to instructions supplied with each carton. Improper installation or workmanship should be directed to the contractor who installed the floor.

Claims

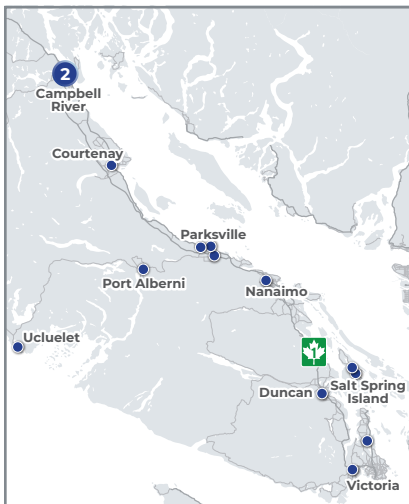
This guarantee applies only to the original purchaser and proof of purchase is required for all claims. Claims for wear must show a minimum dime size area. This guarantee is pro-rated based on the amount of time the floor has been installed. If you wish to file a claim under warranty, contact the authorized dealer where the flooring was purchased.

Visit your Local Windsor Plywood Store

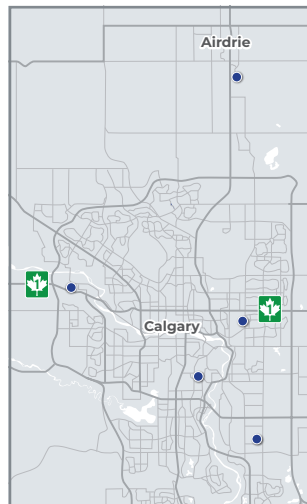
With over 60 locations across
Western & Central Canada and Northwestern USA



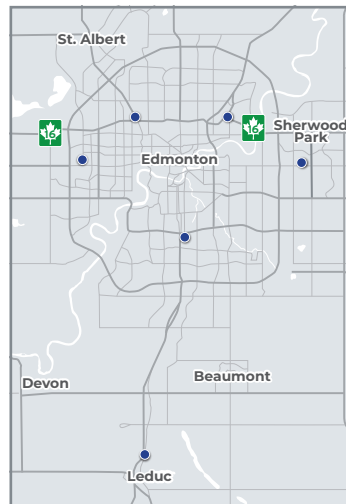
SOUTHEASTERN VANCOUVER ISLAND, BC



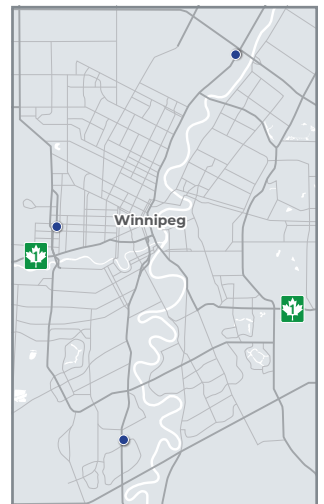
CALGARY, ALBERTA



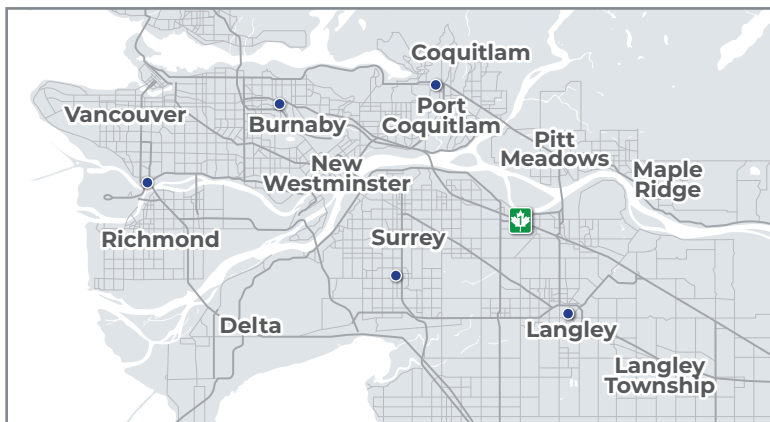
EDMONTON, ALBERTA



WINNIPEG, MANITOBA



METRO VANCOUVER, BC



Windsor Plywood

windsorplywood.com