

SELF LOCKING VINYL PLANK

INSTALLATION GUIDE



SUITABLE SURFACES

Lightly textured or porous surfaces. Well bonded, solid floors. Dry, clean, well-cured concrete. Wood floors with plywood on top. All surfaces must be clean and dust free.

UNSUITABLE SURFACES

Rough, uneven surfaces. Rough, heavily textured and/or uneven surfaces may telegraph through the vinyl and distort the finished surface.

Do not install this product in areas which are exposed to long term direct sunlight such as sun rooms or solariums. Not recommended for installation over floors with under floor heating.

WARNING: DO NOT REMOVE OLD RESILIENT FLOORING. THESE PRODUCTS MAY CONTAIN EITHER ASBESTOS FIBERS OR CRYSTALLINE SILICA, WHICH CAN BE HARMFUL TO YOUR HEALTH.

PREPARATION

The vinyl planks should be allowed to acclimatize at room temperature (approx 20°C/68°F) for 48 hours prior to installation. Carefully check planks for any defects before installation. Check that all **BATCH NUMBERS** and **ITEM NUMBERS** are the same and that you have purchased sufficient material to complete the job. Remove any traces of glue or residue from the previous flooring.

New concrete floors need to dry out for at least 60 days prior to installation. Wood plank floors require a plywood subfloor. All nail heads must be driven down below the surface. Securely nail all loose boards. Scrape, plane or fill uneven boards, holes or cracks using floor leveling compound, if sub-floor is uneven - over 3.2 mm (1/8") within a span of 1.2 m (4'). If installing over existing tile, use a floor leveling compound to skim coat grout lines. Make sure the floor is smooth, clean, and free of wax, grease, oil or dust, and sealed as necessary before laying planks.

The maximum run length is 9.14m (30') in either direction or an area of 83.6m² (900 ft²). Installation exceeding this size will require transition strips.

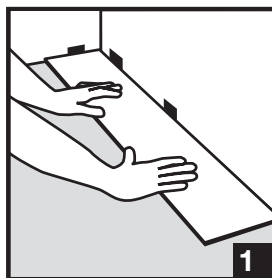
TOOLS AND SUPPLIES

Circular saw, utility knife, spacers, pencil, tape measure, ruler and safety goggles.

INSTALLATION

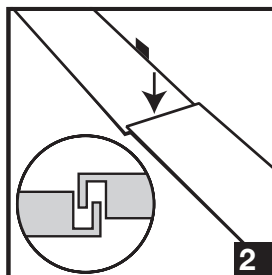


Begin laying your floor in the left corner of the longest wall. Start by placing the first panel with the groove side to the wall. Use spacers along each



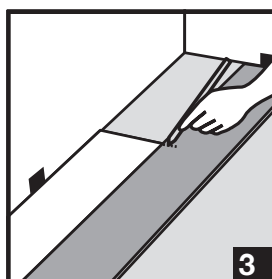
wall to maintain an expansion space of 8-12 mm (3/8"-1/2") between the wall and the flooring. **Diagram 1.**

NOTE: This spacing must also be maintained between the floor and all vertical surfaces, including cabinets, posts, partitions, door jambs and door tracks. You will also need to use transition strips in doorways and between rooms. Failure to do so may cause buckling or gapping.



To attach your second panel, lower and lock the end groove of the second panel into the end tongue of the first panel. Line up edges carefully. The panels should be flat to the floor. **Diagram 2.**

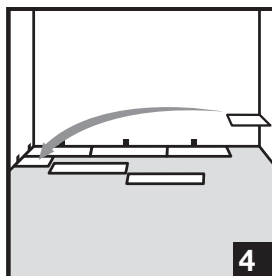
Continue connecting the first row until you reach the last full panel. Fit the last panel by rotating the panel 180° with the pattern side upward. Place it beside the row, mark and then saw off excess. Attach as described above. **Diagram 3.**



Begin the next row with the off-cut piece from the previous row to stagger the pattern. Pieces should be a minimum of 200 mm (8") long and joint offset should be at least 152.4 mm (6"). **Diagram 4.**

To start your second row, lower the side groove into the side tongue of the panel in the previous row and lock into place. The panels should be flat to the floor.

Diagram 5.



Attach the second panel in the new row by lowering and locking the side groove on the long side of the plank into the side tongue of the first panel. Then lower and lock the end groove into the end tongue of the plank in the previous row. Continue laying remaining panels in this manner.

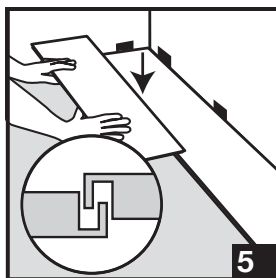
To fit the last row, lay a panel on top of the previous row. With the tongue to the wall, lay another panel upside down on the one to be measured and use it as a ruler. Don't forget to allow room for spacers. Cut the

panel and attach into position. **Diagram 6.**

Door frames and heating vents also require expansion room. First cut the panel to the correct length. Then place the cut panel next to its actual position and use a ruler to measure the areas

SELF LOCKING VINYL PLANK

INSTALLATION GUIDE



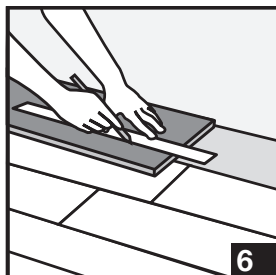
to be cut out and mark them. Cut out the marked points allowing the necessary expansion distance on each side.

Diagram 7.

You can trim door frames by turning a panel upside down and using a handsaw to cut away the necessary height so that panels slide easily under the frames.

Diagram 8.

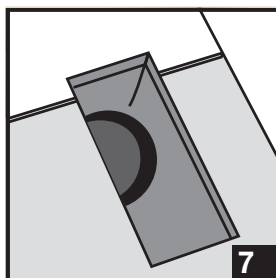
Remove the spacers once the floor is completely installed.



CARE AND MAINTENANCE

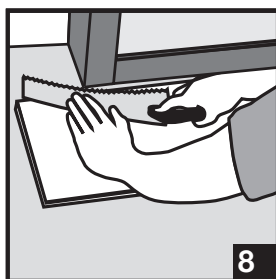
Avoid exposure to direct sunlight for prolonged periods of time. Use drapes or blinds to minimize direct sunlight during peak sunlight hours.

- Sweep regularly to remove surface grit and dust. Use a damp cloth or mop to clean up any dirt and footprints. All spills should be cleaned up immediately.



CAUTION: PLANKS ARE SLIPPERY WHEN WET.

- Never use wax, polish, abrasive cleaners or scouring agents as they may dull or distort the finish.
- High heels can damage floors.
- Do not allow pets with unclipped nails to scratch or damage the floor.



Use protective pads under furniture. If it becomes necessary to move any heavy fixtures or appliances over the flooring on casters or dollies, the flooring should be protected with 0.64 cm (1/4") or thicker plywood, hardboard or other underlayment panels.

Use doormats at entrance ways to protect the floor from discolouring. Avoid using rubber-backed rugs, as they may stain or discolour the vinyl flooring. If you have an asphalt driveway, use a heavy-duty

doormat at your main door, as chemicals in asphalt can cause vinyl flooring to yellow.

If other trades are in the work area, a floor protector is highly recommended to help protect the finish of the floor.

CAUTION: Some types of nails, such as common steel nails, cement coated or some resin or rosin coated nails, may cause a discolouration of the vinyl floor covering. Use only non-staining fasteners with underlayment panels. The procedure of gluing and screwing underlayment panels is not recommended. Solvent-based construction adhesives are known to stain vinyl floor coverings. All responsibility for discolouration problems caused by fastener staining or the use of construction adhesive rests with the underlayment installer/consumer.

HIGHLY RECOMMENDED

It's a good idea to save a few planks in case of accidental damage. Boards can be replaced or repaired by a flooring professional.

WARRANTY

This guarantee is for replacement or refund of the vinyl plank flooring only, no labor (including the cost of labor for installation of the replacement floor) or costs incurred with loss of time, incidental expenses or any other damage. It does not cover damage from improper installation or maintenance (including side or end gapping), burns, tears, indentations, stains or reduction in gloss level due to normal use and/or exterior applications. Gapping, shrinkage, squeaks, fading or structural sub floor related issues are not covered under this warranty. Temperature variations - **excessive heat or below freezing (-4°C/25°F and below) - may cause expansion or contraction of the product.**

10 Year Residential Warranty

Our 10-Year Residential Limited Warranty for vinyl plank means that for 10 years, from the date of purchase, your floor will be free from manufacturing defects and will not wear through or permanently stain from common household stains when installed and maintained according to instructions supplied with each carton.

5 Year Commercial Warranty

Our 5 Year Limited Commercial Warranty for vinyl plank means that for 5 years, from the date of purchase, your floor will be free from manufacturing defects and will not wear through when installed and maintained according to instructions supplied with each carton. Improper installation or workmanship should be directed to the contractor who installed the floor.

Claims

This guarantee applies only to the original purchaser and proof of purchase is required for all claims. Claims for wear must show a minimum dime size area. This guarantee is pro-rated based on the amount of time the floor has been installed. If you wish to file a claim under warranty, contact the authorized dealer where the flooring was purchased.