

# ARBORITE Maison



**Windsor Plywood**  
the *experts* you need to know!  
[www.windsorplywood.com](http://www.windsorplywood.com)



**Fresh Ideas for  
Every Kitchen**

**44 Laminates as  
Beautiful as the  
Great Outdoors**





## PANORAMA

- 4 The Modern Kitchen**  
Long lines and a near monochromatic palette keep this kitchen streamlined.
- 8 The Loft Life**  
Mix industrial and organic materials to create this open and airy cooking space.
- 12 Luxe Country Living**  
Warm hues and elements polished over time make this kitchen feel like an embrace from an old friend.

## 16 Panorama Collection

## WELCOME HOME

- 32 Welcome Home**  
These composite-stone laminates are ideal for compact and traditional kitchens.

## 38 Welcome Home Collection

ON THE COVER: Mont Blanc P1009, Photograph by Stefano Massei

## Welcome to Maison\*

The kitchen is the heart of a home. It's where you gather your family and friends close, sharing a meal, a laugh, and a moment of togetherness.

Yet your kitchen should feed your senses as well as your soul. That's why we've created Arborite Maison laminates for homes large and small. The Arborite Panorama and Welcome Home collections come in patterns ranging from luxurious Italian marble to glittering quartz to classic slate; they bring all the beauty of the natural world into your kitchen at a fraction of the cost of natural stone. Isn't it time to let Arborite Maison help you create the backdrop of your life?

\*That's how we say 'home' here in Montreal.

**ARBORITE**  
HIGH PRESSURE LAMINATES

# Panorama. Stunning realism. High fidelity. Microtextured finishes. Full size.

THE PANORAMA COLLECTION OFFERS uninterrupted vistas of luxurious marble, majestic granite, and warm travertine, with each sheet capturing a non-repeating slab of the world's finest stones. This is unabridged natural splendor that won't break your budget.

PANORAMA  
ARBORITE



# The Modern Kitchen

With its sleek appearance and uncluttered look, the modern kitchen is the antidote to our harried lives. Clean lines with white, gray or black accents are popular choices, with stainless steel accents offering a complimentary flair. Just keep it monochromatic to retain the visual effect. Pair with organic surfaces such as wood or stone to soften the kitchen's long, horizontal lines.



**SAINT LAURENT MARBLE**  
P1008

.....  
With white veining threading through a noir background, *Saint Laurent Marble* is luxurious and dramatic—a stunning companion to light or dark cabinetry.





**SAINT LAURENT MARBLE**  
P1008  
.....  
With an uncommon depth of color  
and detail, *Saint Laurent Marble*  
makes a statement.

# To complement your modern kitchen:



**TUSCAN TRAVERTINE**  
P1003  
.....  
Varying layers and soft earth tones  
give *Tuscan Travertine* an age-old,  
organic feel.



**ARABESCATO MARBLE**  
P1000  
.....  
Ivory white with rich veining,  
*Arabescato Marble* offers an  
understated elegance.



**TYPHOON BORDEAUX CRÈME**  
P1005  
.....  
*A light granite, Typhoon Bordeaux  
Crème courses with russet veins and  
shimmering mica.*

Panorama samples on this page shown at 25%





# The Loft Life

Although dating back to 1800s Paris, lofts came into their own in 1970s New York, when artists transformed former factories into live/work spaces replete with industrial elements. The kitchens followed form, favoring metal cabinetry, cement floors, and neutral palettes.

Nowadays loft kitchens offer more sophisticated takes on rugged beauty. The key is playing with visual texture and mixing the rough with the smooth. So go ahead, pair shiny appliances with exposed brick walls. Match unfinished wood beams with industrial-inspired countertops. Just keep it open and airy to maximize the effect.

**CITYSCAPE LOFT**  
P1010

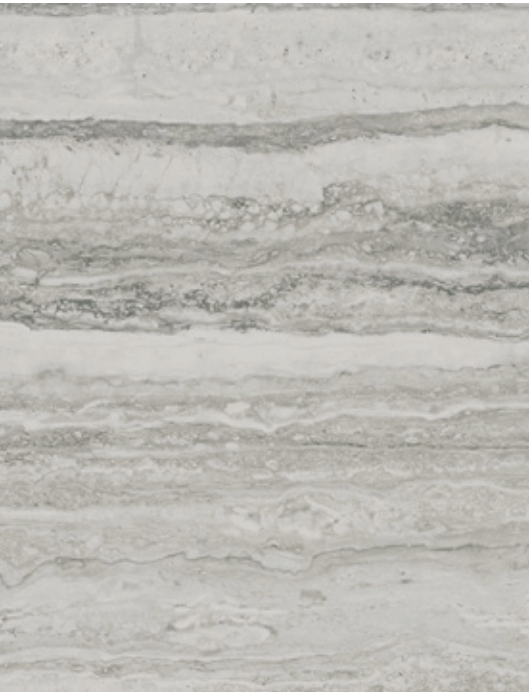
.....  
The color of wet cement, *Cityscape Loft* is ideal for urbanites in search of a low-maintenance, industrial-inspired surface.



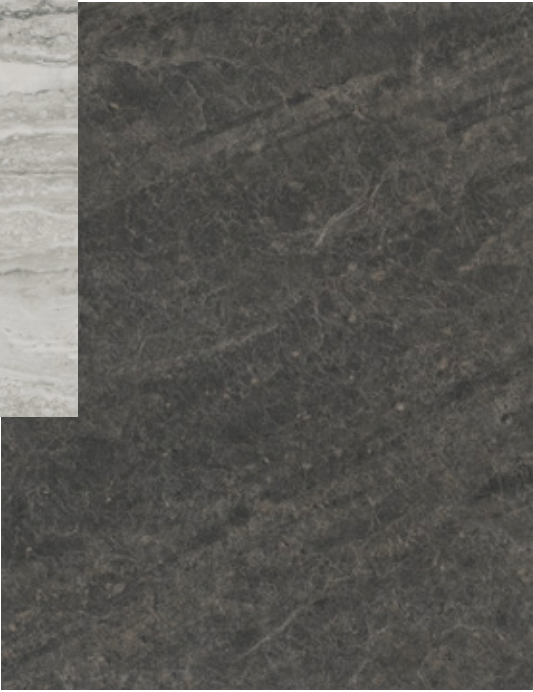


**INDUSTRIAL LOFT**  
P1011  
.....  
Evoking the glazed look of oxidized metal, *Industrial Loft* combines light and dark shades and works well with matte textures.

# To complement your loft kitchen:



**ROMAN TRAVERTINE**  
P1004  
.....  
Deeply layered and characterized by pitted holes and troughs, this stone is peaceful, tranquil and serene.



**CINDER SLATE**  
P1007  
.....  
With subtle shifts in coloring that are less bold than marble or granite, *Cinder Slate* offers a stately, uniform appearance.

Panorama samples on this page shown at 25%



# Luxe Country Living

Like an old friend, a country kitchen pulls no punches, embracing you with its warmth and familiarity. Choose warm, classic earthy hues or go with a cooler Mediterranean-inspired palette with sun-bleached whites and pastel shades for a touch of whimsy. Nature is also evident with rough-hewn wood, clay tiles, and reclaimed materials. These are elements polished over time and with stories to tell. Grab a seat and hear their tales.



## MONT BLANC P1009

A lightly veined marble, *Mont Blanc* is nearly translucent, with its layers of white and gray emitting a soft glow.





**ANTICO GRIGIO**  
P1012

A rustic granite with prominent veins, *Antico Grigio* offers intense gold and gray undertones that also suit Mediterranean-inspired kitchens.

# To complement your country rustic kitchen:



**SANTA CECILIA**  
P1002

Visually sumptuous, *Santa Cecilia* is a granite stone alive with ethereal light, honey highlights, and burgundy bursts.



**MAGMA BROWN GRANITE**  
P1001

*Magma Brown Granite's* marriage of black and earthen granite is forged in flame and flecked with gold.



**TYPHOON BORDEAUX GREIGE**  
P1006

A dark Brazilian granite, *Typhoon Bordeaux Greige* courses with dark-burgundy grains and glinting mica.

Panorama samples on this page shown at 25%



# The Collection

Colors in this brochure are representations only and may vary slightly from the original. A true and reliable color match is only possible with a sample, available free from Arborite.com or by calling 800.361.8712.

Samples on this page show 5’ × 8’ full sheet layout

Samples on following pages shown at 100%



New



INDUSTRIAL LOFT  
P1011



ANTICO GRIGIO  
P1012



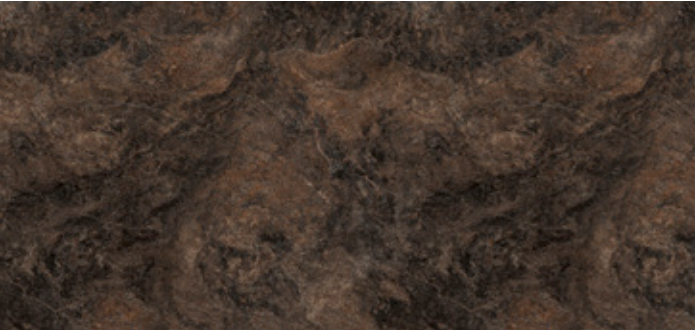
CITYSCAPE LOFT  
P1010



MONT BLANC  
P1009



SAINT LAURENT MARBLE  
P1008



MAGMA BROWN GRANITE  
P1001



SANTA CECILIA  
P1002



TYPHOON BORDEAUX GREIGE  
P1006



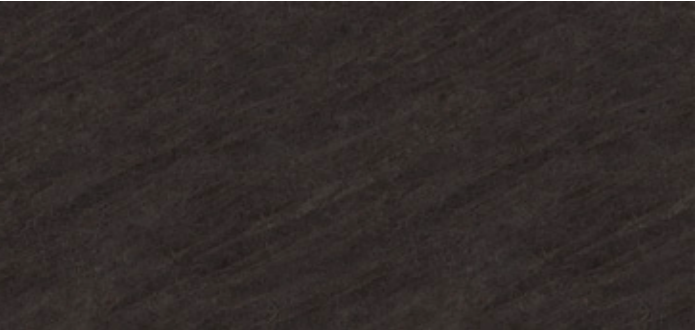
TYPHOON BORDEAUX CRÈME  
P1005



ROMAN TRAVERTINE  
P1004



TUSCAN TRAVERTINE  
P1003



CINDER SLATE  
P1007



ARABESCATO MARBLE  
P1000



Picture how the Panorama collection will look in your home with these life-size examples of the line's offerings. They bring the vivid beauty of the world's finest stones right to your kitchen.

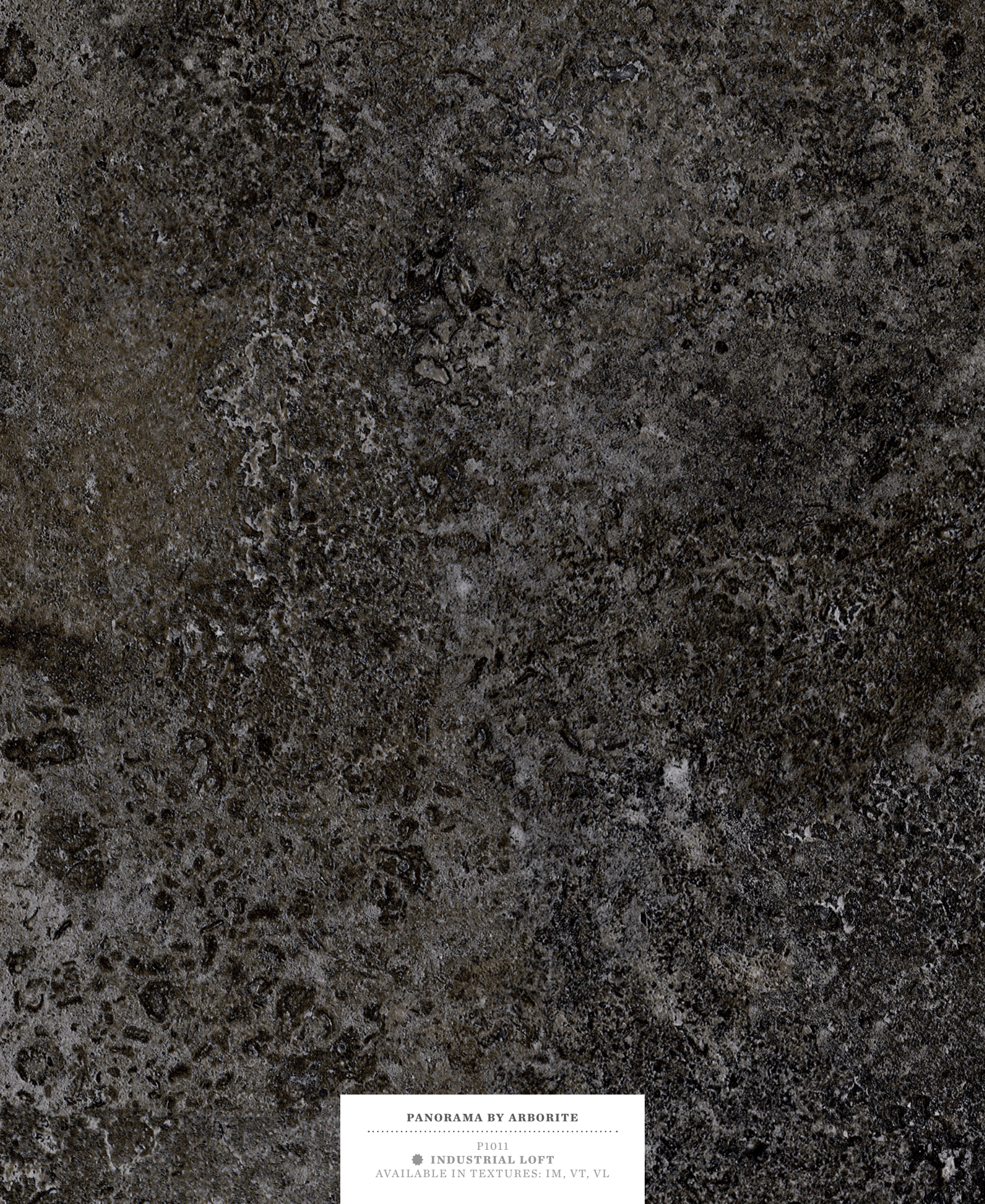
PANORAMA BY ARBORITE

P1012

ANTICO GRIGIO

AVAILABLE IN TEXTURES: IM, VT, VL



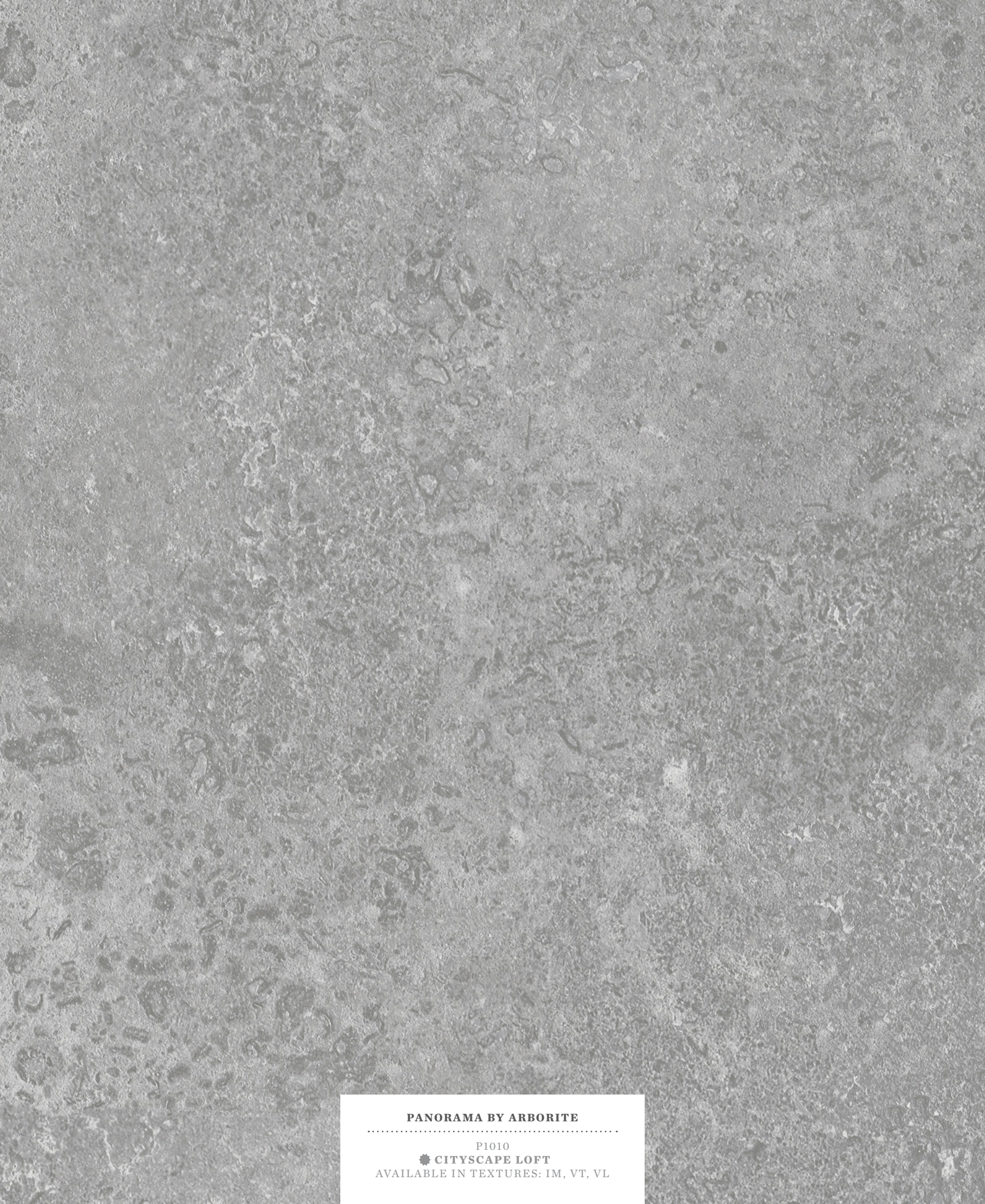


PANORAMA BY ARBORITE

P1011

• INDUSTRIAL LOFT

AVAILABLE IN TEXTURES: IM, VT, VL



PANORAMA BY ARBORITE

P1010

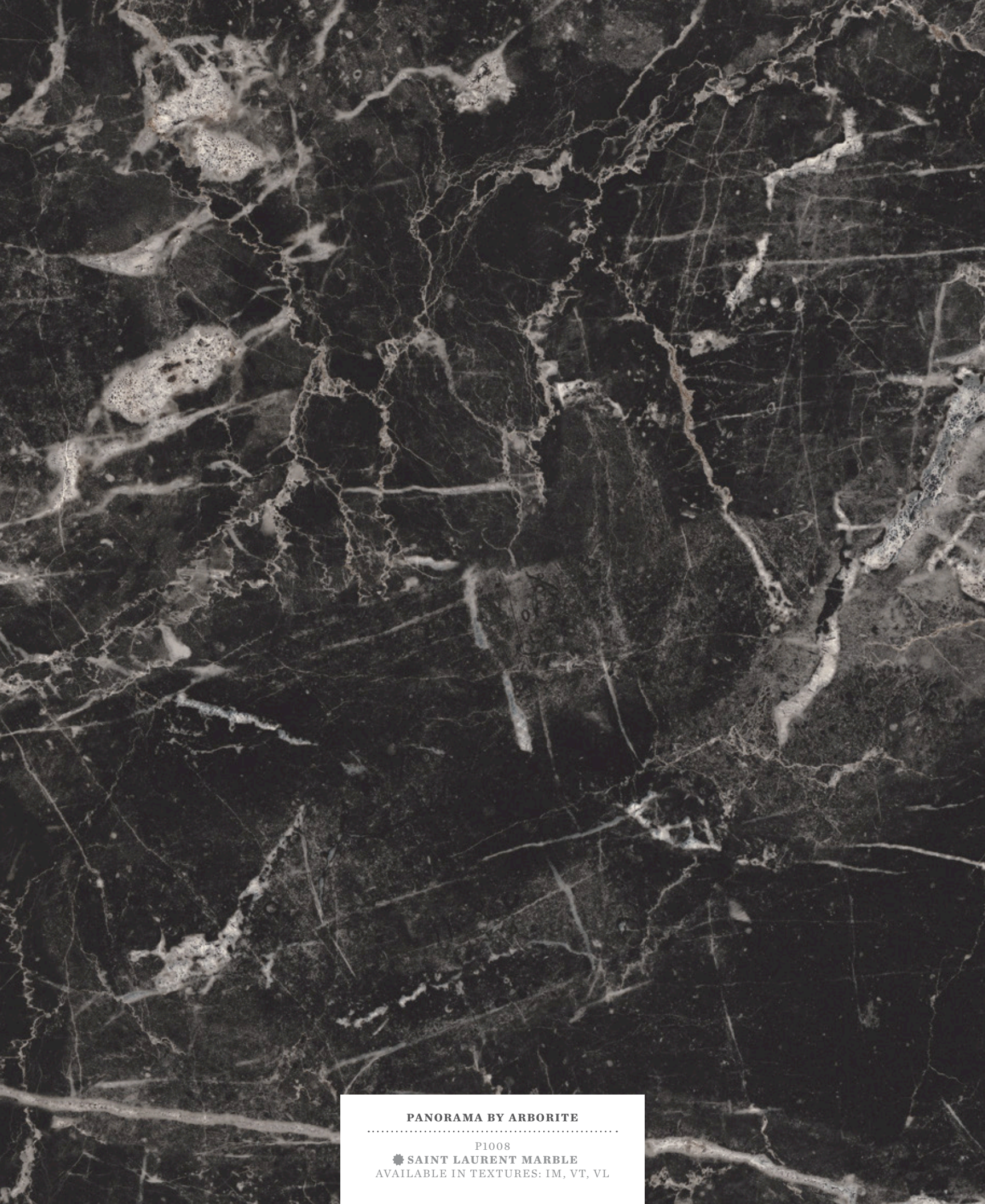
• CITYSCAPE LOFT

AVAILABLE IN TEXTURES: IM, VT, VL





PANORAMA BY ARBORITE  
.....  
P1009  
✿ MONT BLANC  
AVAILABLE IN TEXTURES: IM, VT, VL



PANORAMA BY ARBORITE  
.....  
P1008  
✿ SAINT LAURENT MARBLE  
AVAILABLE IN TEXTURES: IM, VT, VL





**PANORAMA BY ARBORITE**  
.....  
P1001  
**MAGMA BROWN GRANITE**  
AVAILABLE IN TEXTURES: IM, VT, VL



**PANORAMA BY ARBORITE**  
.....  
P1002  
**SANTA CECILIA**  
AVAILABLE IN TEXTURES: IM, VT, VL





**PANORAMA BY ARBORITE**  
.....  
P1005  
**TYPHOON BORDEAUX CRÈME**  
AVAILABLE IN TEXTURES: IM, VT, VL

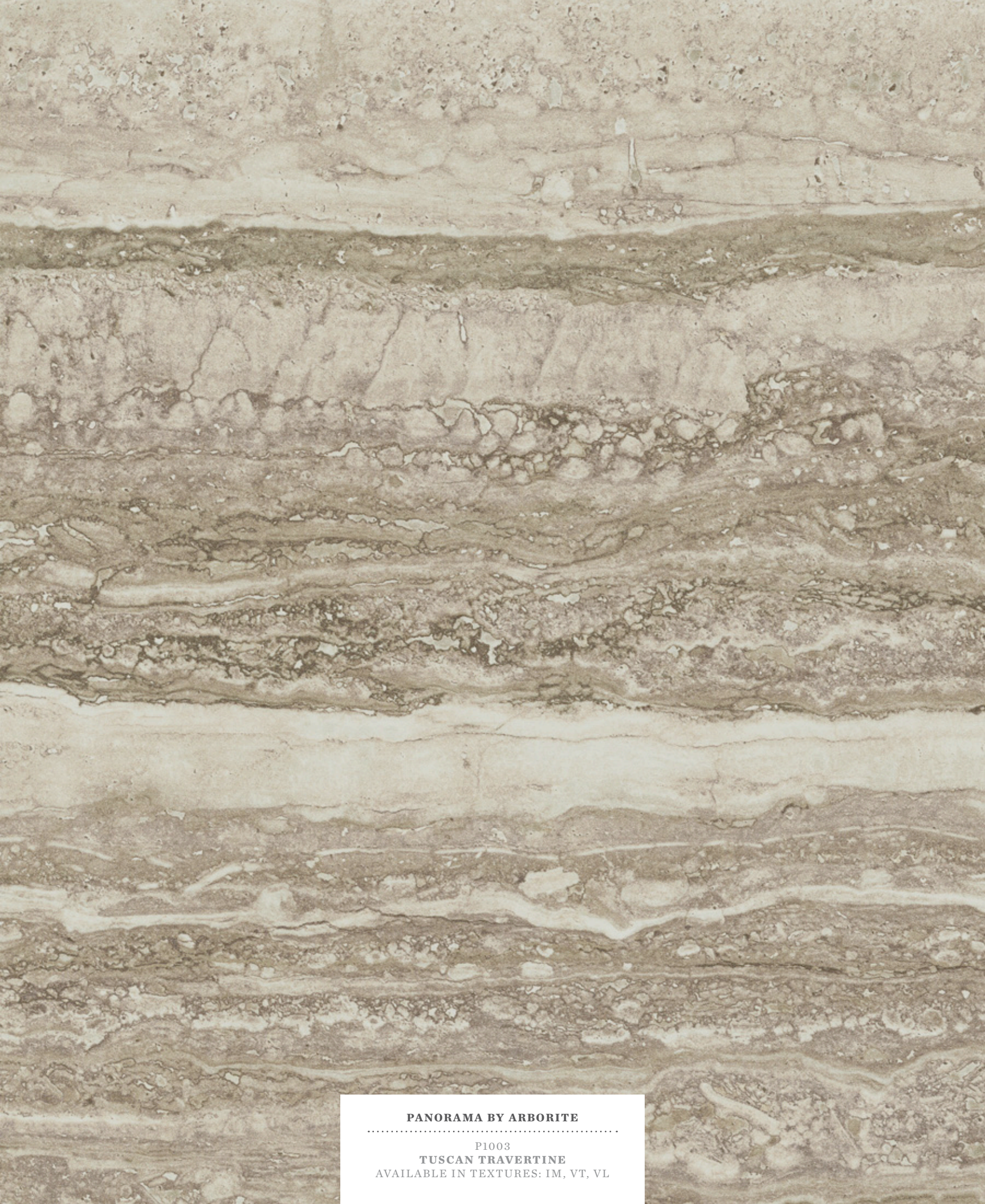


**PANORAMA BY ARBORITE**  
.....  
P1006  
**TYPHOON BORDEAUX GREIGE**  
AVAILABLE IN TEXTURES: IM, VT, VL





**PANORAMA BY ARBORITE**  
.....  
P1004  
**ROMAN TRAVERTINE**  
AVAILABLE IN TEXTURES: IM, VT, VL



**PANORAMA BY ARBORITE**  
.....  
P1003  
**TUSCAN TRAVERTINE**  
AVAILABLE IN TEXTURES: IM, VT, VL





**PANORAMA BY ARBORITE**  
.....  
P1007  
**CINDER SLATE**  
AVAILABLE IN TEXTURES: IM, VT, VL



**PANORAMA BY ARBORITE**  
.....  
P1000  
**ARABESCATO MARBLE**  
AVAILABLE IN TEXTURES: IM, VT, VL





# Nuanced Beauty For Your Kitchen

Tough to stain and easy to maintain, the Arborite Welcome Home Collections' stone laminates are ideal for both compact and traditional kitchens. The subtle patterns add style without overwhelming small spaces, while the neutral palettes play well with any décor.



## ARCTIC ICE

P-395

SPARKLE AND QUIET SOPHISTICATION are what [Arctic Ice](#) has to offer. The cool gray undertones are an ideal foil to neutral cabinetry and stainless steel appliances, especially in condo or open-plan kitchens.



## ARCTIC SNOW

P-394



AS BRIGHT AND PURE AS ITS NAMESAKE, Arctic Snow adds luminescence to a monochromatic kitchen. Pair it with a textured tile to add visual interest, or introduce pops of color for a playful touch.

## ARCTIC TUNDRA

P-396



WITH ITS CREAMY WHITE BASE flecked with gray stones, Arctic Tundra is the ultimate supporting player. It's more visually interesting than a neutral solid, but won't upstage the room's architectural details.



## KLONDIKE RIVERBED

P-397



LIKE GOLD SITUATED BENEATH FLOWING WATER, Klondike Riverbed glimmers ever so slightly, the gleam filtered through sand and gray tones. Use the laminate as a counterpoint to dark cabinetry, or to add a warm glow to a minimal space.

## YUKON RIVERBED

P-398



A COOL TAKE ON GRAY QUARTZ, Yukon Riverbed offers all of the stone's benefits—stain-resistance and exceptional durability—at a fraction of its inspiration's price. Try it as an alternative to white in formal and traditional kitchens.



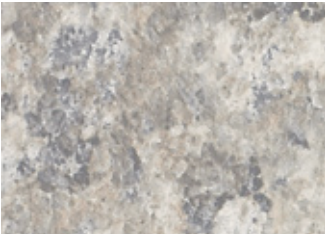
THE WELCOME HOME  
COLLECTION



St. Lawrence Bedrock  
P-277



Mississippi Bedrock  
P-278



Gaspé Grey Granite  
P-282



Tundra Taupe Granite  
P-283



Sahara Blaze  
P-335



Granito Terra  
P-340



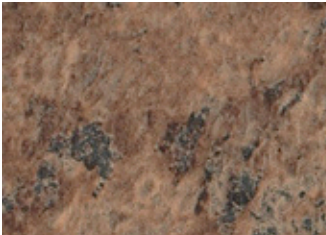
Granito Foresta  
P-341



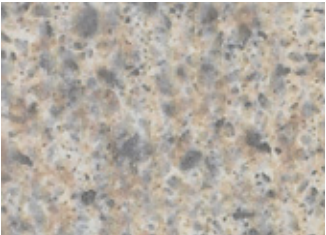
Granito Oceano  
P-342



Klondike Gold Granite  
P-284



Jasper Brown Granite  
P-285



Appalachian Stone  
P-288



Montaña Sunrise  
P-302



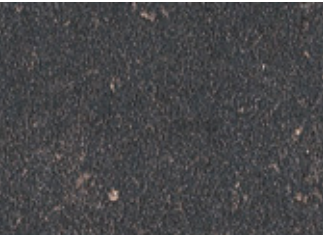
Inukshuk Brown  
P-343



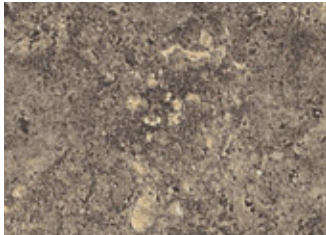
Inukshuk Grey  
P-344



Inukshuk Taupe  
P-345



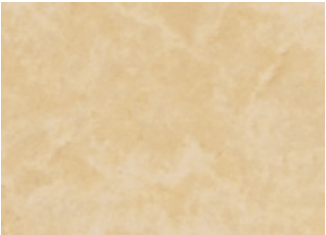
Inukshuk Carbon  
P-346



Montaña Dusk  
P-304



Montaña Midnight  
P-305



Jaipur Pearl  
P-319



Jaipur Amber  
P-320



Sahara Eclipse  
P-352



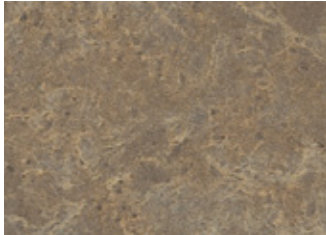
Sahara Nights  
P-353



❄️ Arctic Snow  
P-394



❄️ Arctic Ice  
P-395



Jaipur Topaz  
P-321



Jaipur Onyx  
P-322



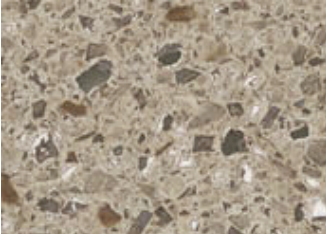
Sahara Sand  
P-333



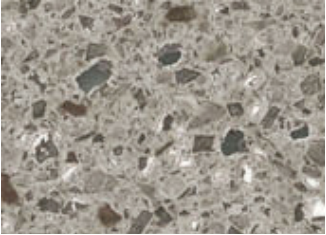
Sahara Storm  
P-334



❄️ Arctic Tundra  
P-396



❄️ Klondike Riverbed  
P-397



❄️ Yukon Riverbed  
P-398

❄️ New

Samples shown at 100%  
—  
Colors in this brochure are representations only and may vary slightly from the original. A true and reliable color match is only possible with a sample, available free from Arborite.com or by calling 800.361.8712.





Arborite  
385 Lafleur,  
LaSalle (Quebec)  
Canada H8R 3H7

For samples and  
technical information:  
T 800.996.0366  
F 514.363.0903  
info@arborite.com  
www.arborite.com



Follow Arborite on  
Facebook, Instagram,  
Pinterest & Twitter:  
@ArboriteHPL



FSC® material on request



**ARBORITE**®  
HIGH PRESSURE LAMINATES